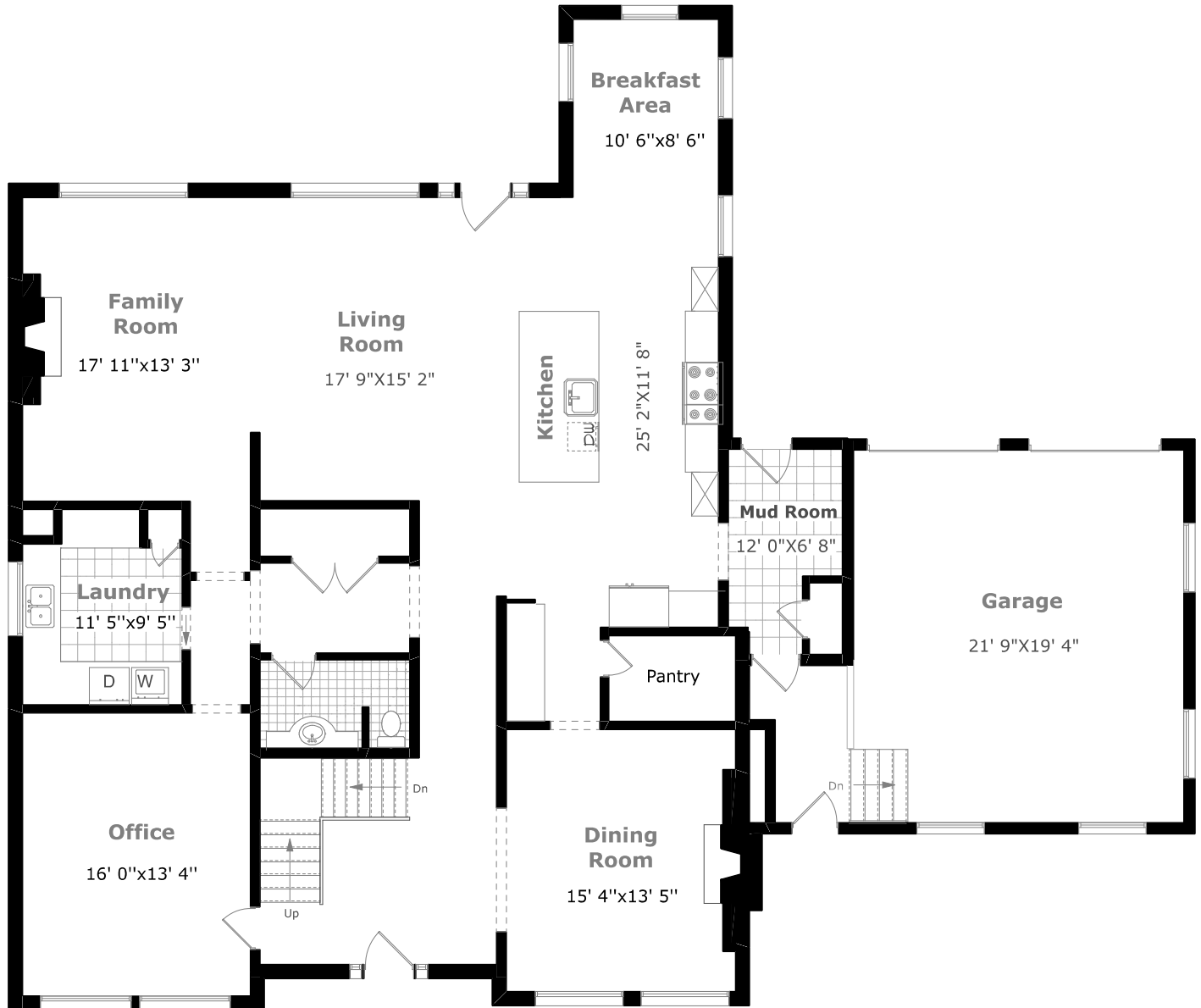
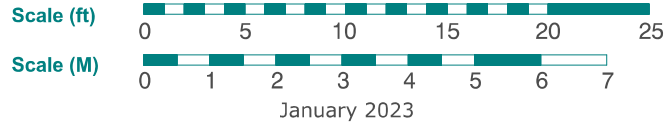


265 Cairncroft Road



Main Floor Plan

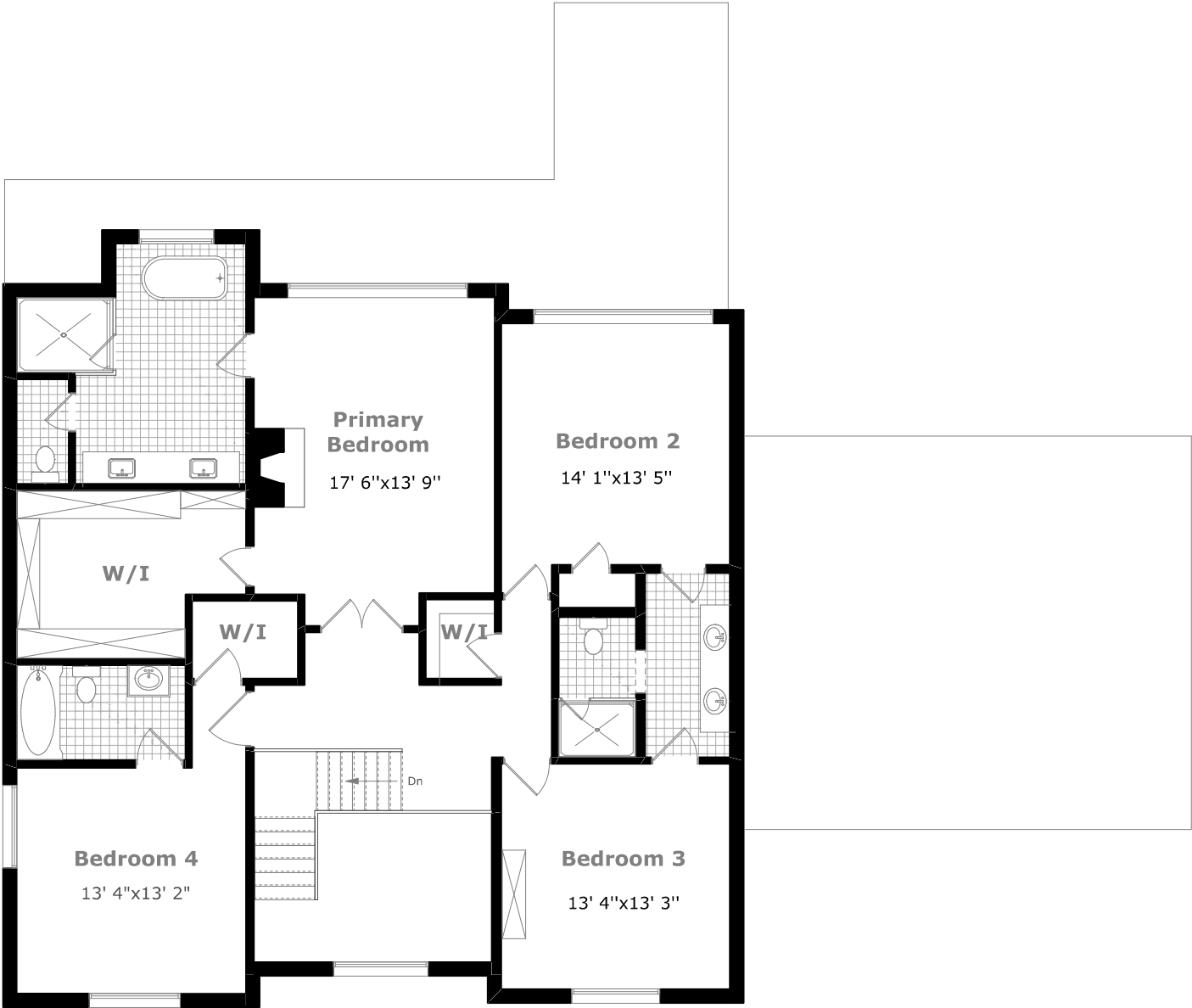
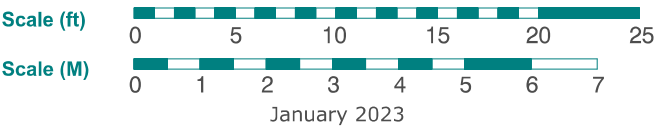
2,260.9 sq. ft. +

515.6 sq. ft. (Garage)



Measurements may not be 100% accurate. Floor Plans provided for illustrative purposes only. Room sizes not used to calculate area.

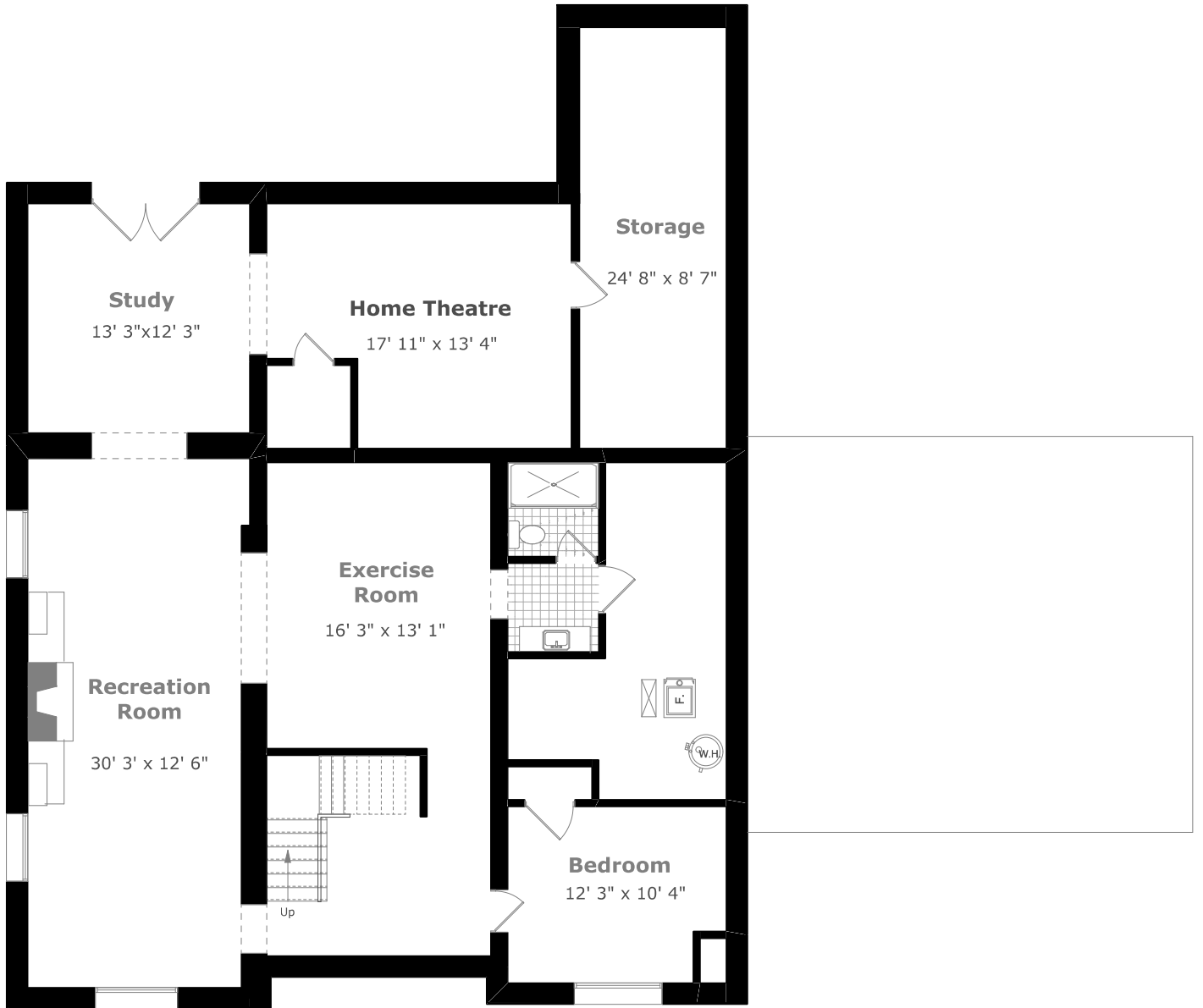
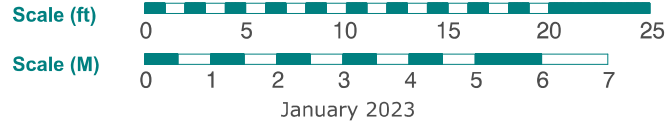
265 Cairncroft Road



2nd Floor Plan

1,832.3 sq. ft.

265 Cairncroft Road



Lower Level Plan

2,190.5 sq. ft.



Measurements may not be 100% accurate. Floor Plans provided for illustrative purposes only. Room sizes not used to calculate area.